



M A R I N E   Q U A R T E R

—  
MQII

EXPAND YOUR VIEW OF BROADWATER LIVING.  
WELCOME TO LIFE ON THE EDGE.



## THE CHANGING FACE OF SOUTHPORT.

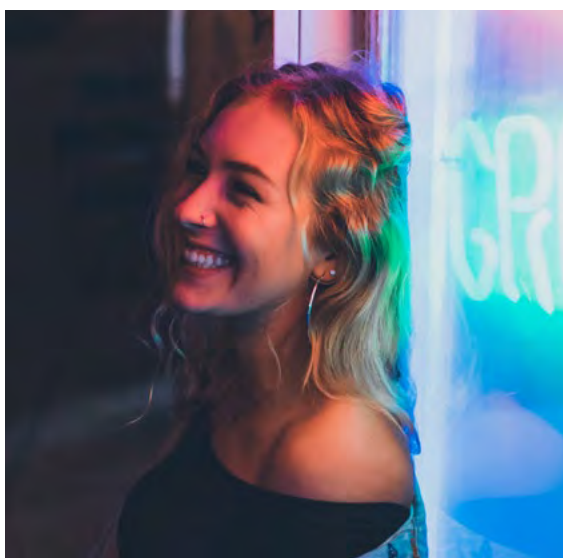
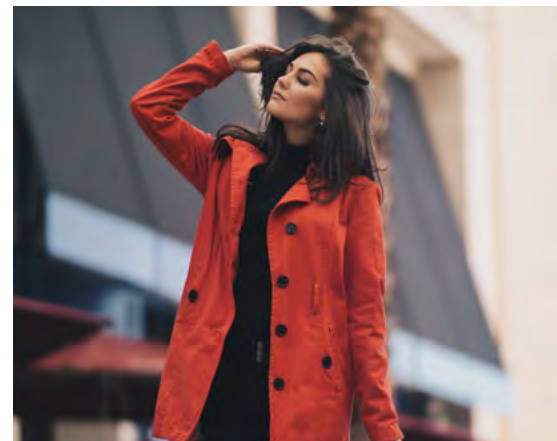
A RENAISSANCE IS TAKING PLACE IN SOUTHPORT.  
A REVIVAL OF CLASSICAL THINKING.



A century ago, Brisbane's families came here to escape the Summer heat and holiday by the seaside. Today, savvy buyers are rediscovering the untapped value of Southport, as it enters a new era defined by modern retail villages, an eclectic dining scene, contemporary apartments and of course the blue expanse of the Broadwater.

As the only approved residential development on the Broadwater Parklands, Marine Quarter is perfectly positioned on the waterfront side of Marine Parade, to deliver the ultimate Southport lifestyle. Stroll along the waterfront, catch a movie or the latest fashion at Australia Fair, indulge your senses in Chinatown or hop aboard the light rail to the GC University Hospital or Surfers Paradise.

Southport is here, waiting for you.



# ON THE PARK. BY THE SEA.

A GREEN BELT ON THE EDGE OF THE BLUE.

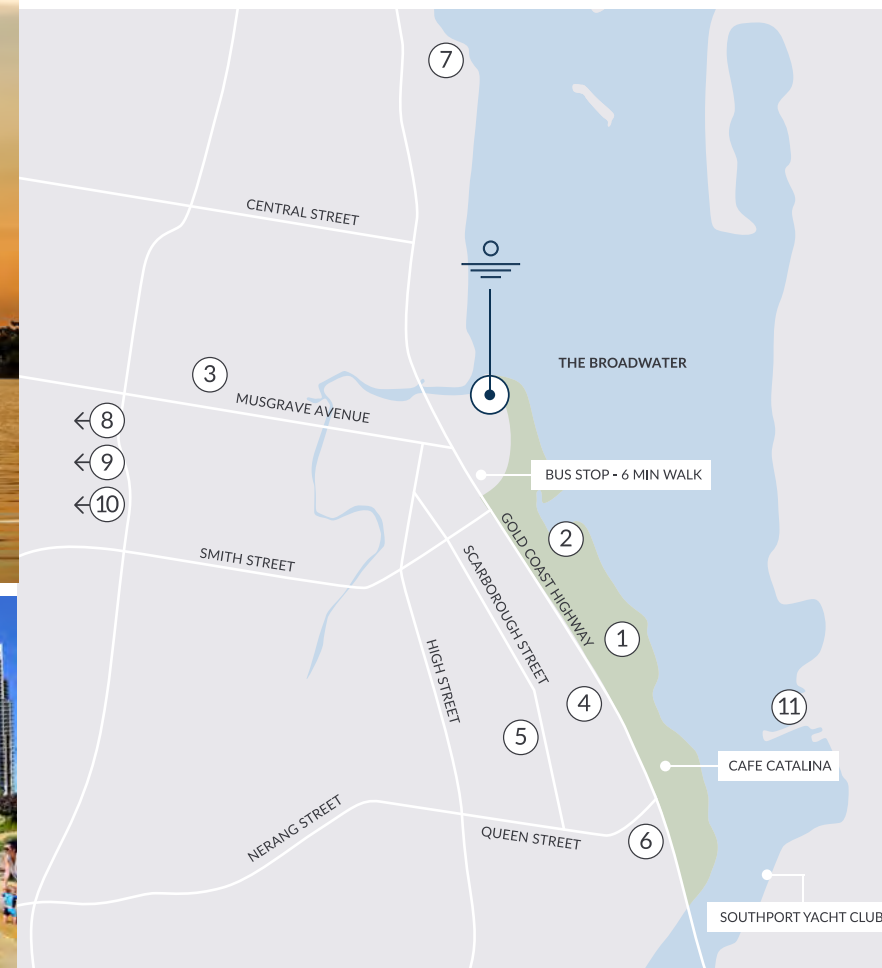


The Broadwater Parklands has matured into an iconic city landmark. This irreplaceable 2.4km stretch of waterfront is the Gold Coast's own 'Central Park'. And Marine Quarter is uniquely positioned in the parklands, to deliver a serenity rarely found in urban settings.

Sunrise to sunset, enjoy the best of both worlds - modern urban living, in a green belt on the edge of the blue. Early morning walks by the water.

A coffee with friends at Cafe Catalina. Bike rides through the parklands. Or a picnic of fresh take away fish & chips watching the boats drift by. On a whim, you can cycle to the popular restaurants and edgy boutiques at nearby Chirn Park.

It's time to expand your view of Broadwater living, at Marine Quarter.



1. Broadwater Parklands
2. Gold Coast Aquatic Centre (1km)
3. Chirn Park restaurants and cafes (1km)
4. Australia Fair / Event Cinemas (1.5km)
5. Southport CBD (1.5km)
6. Broadwater Parklands Light Rail Station (2.1km)
7. Charis Seafoods (2.1km)
8. Southport Sharks (2.7km)
9. Gold Coast University Hospital (3.7km)
10. Griffith University (4.1km)
11. Marina Mirage (4.4km)

# EXPAND YOUR LIFESTYLE.

AN ADDRESS DESIGNED TO RISE ABOVE.

With its contemporary twin tower design and iconic position on the edge of water and parklands, Marine Quarter is redefining the Southport stretch of the Broadwater. This is a place where the gentle flow of the breeze is constant and the peace of the parklands, unique. Inspired by the contemporary lines of an inner city address, yet exuding the coastal charm of the Gold Coast waterfront, MQ is an address designed to rise above the bustle of the everyday and allow you to refocus. On relaxation, on low maintenance living, and on you.



## MARINE QUARTER



Artist's Impression



Artist's Impression

Artist's Impression

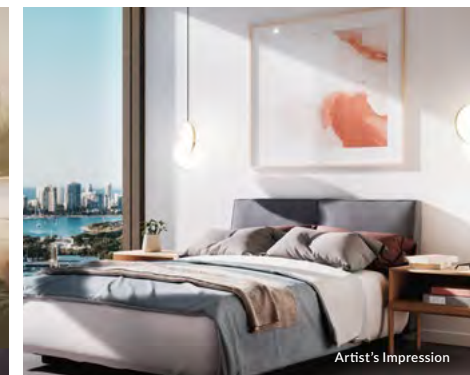
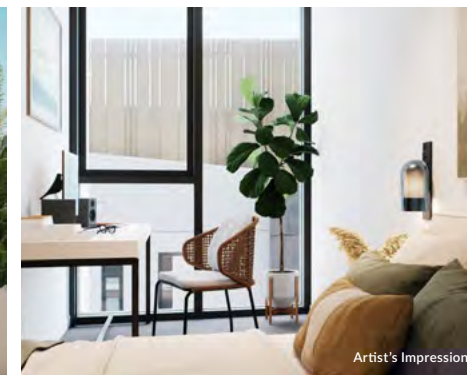
Following the success of stage one the Oceanic Tower, comes its perfect complement, **MQII the Scenic Tower** - A new opportunity to expand your view of Broadwater living. **Apartments are now selling.**



## EXPAND YOUR VIEW.

The design of your home in the Scenic Tower is hallmarked by both the capture of natural light and the smart cross ventilation of the living and bedrooms. Your living space opens onto a deep recessed balcony creating a remarkable indoor-outdoor living environment, giving you the room to entertain your friends and family or enjoy quiet reflections when the mood takes you.

Each apartment and Penthouse has been meticulously designed to maximise its northerly or easterly views through striking floor-to-ceiling glass. Adorned in a timeless, natural palette, the modern open-plan layouts encourage interaction, while versatile multi-functional spaces adapt to your everyday life.





## A SPACE TO CALL HOME

Acutely aware that the 31 level Scenic Tower will be your retreat from the world around you, our designers have addressed every detail that makes it so. Apartments and Penthouses welcome you in, with a sophisticated, interior colour scheme. Stone benchtops, timber flooring, and high-end finishes dress your residence with a sense of style.

Kitchens were envisioned with both elegance and functionality in mind, featuring premium black fittings, European cooking appliances and a dishwasher as standard. Bathrooms feature large format floor to ceiling wall tiles, stone benchtops, twin vanities in selected designs and premium fittings such as black tapware to create a modern luxurious mood.

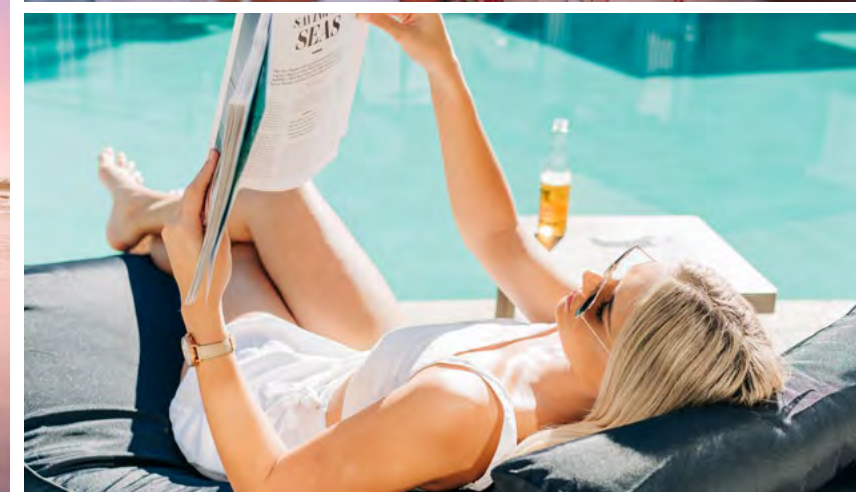
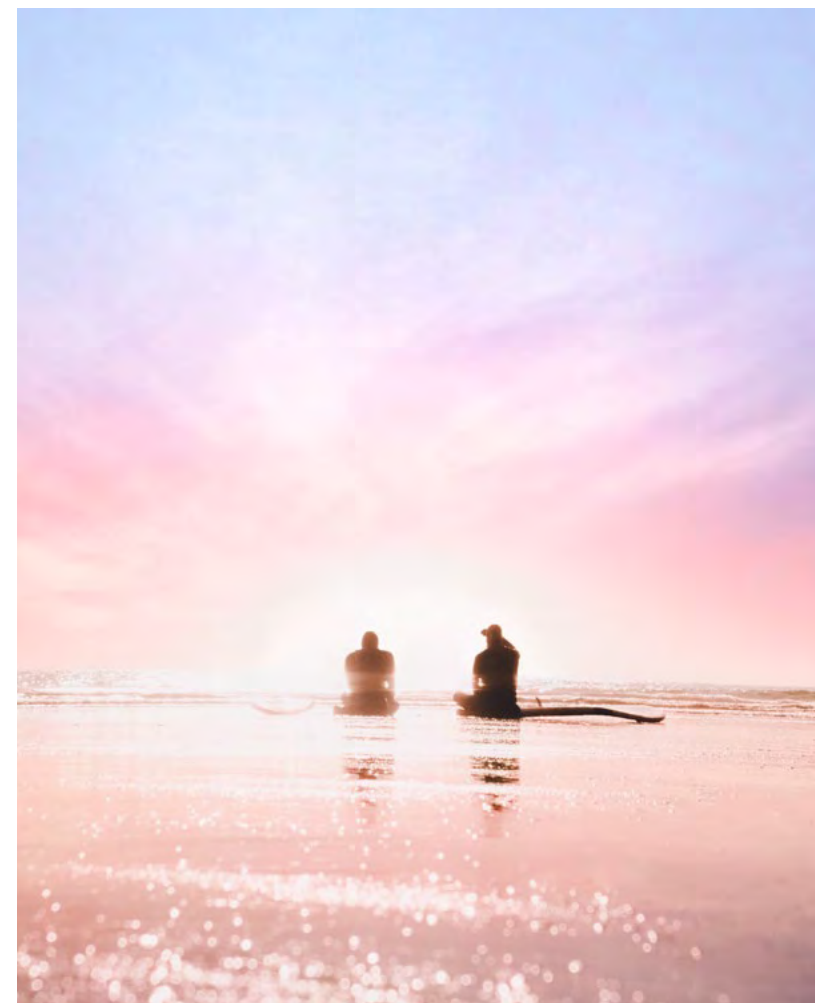


## YOUR PRIVATE OASIS.

---

Living at Marine Quarter's new Scenic Tower will be like living in a private oasis, with resort quality facilities at your beck and call; Including a pool with breathtaking coastal views, a residents' lounge and alfresco dining area, all on the rooftop level. After a morning on the Broadwater or a day in the surf, this is the perfect place to unwind and watch the sun gently set over the Hinterland.

At ground level, there's ample garden spaces to reflect, stretch out a yoga mat or read the latest best seller. And when it's time for a change of pace, the studio gym and infinity pool are yours to enjoy.



DINE IN OR TAKE AWAY.  
WELCOME TO MARINE QUARTER, SOUTHPORT.

---

At Marine Quarter you can go out for lunch, without ever leaving home. Dine-in at one of the stylish eateries on the ground level, or meet your friends in the foyer for a take-away coffee before heading off on your morning walk in the parklands. Each apartment and Penthouse features secure car parking, and for your convenience, storage options are available.

Every minute at Marine Quarter will be unforgettable but when the travel bug does bite, it's easy to lock up and leave with peace of mind, comfortable in the knowledge that your home is maintenance free and secure. Your on-site manager is here to assist. It's time to expand your view of Broadwater living. Welcome to life on the edge. Welcome to Marine Quarter, Southport.





165 Marine Parade  
Southport QLD 4215

Sales Display  
2/1a Stevens Street  
Southport QLD 4215

Call 0410 660 675  
[marinequarter.com.au](http://marinequarter.com.au)



Whilst care has been taken in the preparation of this brochure, the particulars are not to be construed as containing any representation of the facts upon which any interested party is entitled to rely. All interested parties should make their own enquiries. Artists impressions and photography are indicative only and are subject to variations in accordance with the contract terms..